

# TOILET CUBICLE SYSTEMS

## MODULAR SERIES > RSS SYSTEM SPECIFICATIONS

### Scope of Work

Supply and installation of **RESCO MODULAR** Series RSS Floor Mounted Toilet Cubicle System.

### Materials

All Doors, Pilasters and dividing partition shall be of 12mm thick high density waterproof solid compact laminates (phenolic core) with high pressure melamine finished on both sides. All framing shall be heavy-duty specially extruded aluminium section and complete with natural anodize finished.

Power coated finished is available upon request with surcharge.

### Size

The recommended cubicle size shall be 900 mm (W) x 1700 mm (D) for maximum stability. The height of cubicle measured from top of head section to finishing floor level shall be 2003mm. The floor clearance shall be 150mm high.

### Doors

All doors shall be 600mm (unless otherwise as specify) of same material, with all vertical edges chamfered, fixed onto pilaster with 3 nos. of stainless steel hinges and completed with coat hook.

### Pilasters

All pilasters shall be of same material, fixed onto 150mm high stainless steel adjustable leg supports anchored to the floor.

Vertical edges of pilaster shall be incorporated with aluminum door jamb c/w smooth rubber strips to ensure silent closing of cubicle door.

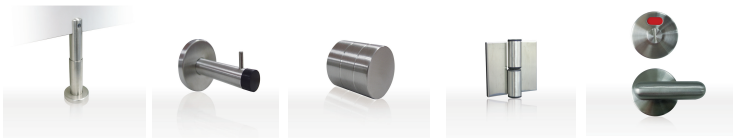
### Partitions

All 12 mm thick dividing partitions shall be of same material with vertical edges fixed to the wall and pilaster with the use of aluminum U-channel.

### Accessories

Each toilet cubicle shall be equipped with the following stainless steel accessories:

- Lockset with indicator on the external.
- Heavy-duty hinges.
- Coat hook cum rubber door stop.
- 150mm high stainless steel adjustable leg.



### Shop Drawings and Colour Sample

Standard shop drawings showing sizes and fixing details of cubicle system will be submitted to the Architect for approval (if required)

RESCO colour will be submitted to the Architect for selection.



# TOILET CUBICLE SYSTEMS

## MODULAR SERIES > RSS SYSTEM

